

# Buckinghamshire Brexit Summit 2019



**Martin Tett**

Leader

Buckinghamshire County Council

MATT

---



# National Overview

EU Referendum held **986 days** ago

**23 days** to go until Brexit, and yet...



# National Overview



*“A week is a long time in politics”...*

- By Tuesday 12<sup>th</sup> March: **vote on government's Withdrawal Agreement**

*If defeated then...*

- By Wednesday 13<sup>th</sup> March: **vote on whether MP's support leaving with no deal / WTO terms**

*If defeated then...*

- Thursday 14<sup>th</sup> March: **vote on 'short extension of Article 50'**

*If defeated then...*

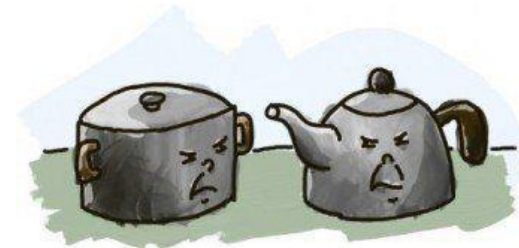




*'My strategy is to go on losing until you come to your senses.'*

# Why talk Brexit now?

- Unprecedented event affecting a multitude of policy areas
- According to government: *“little evidence that businesses are preparing in earnest for a no deal scenario, and evidence indicates that readiness of small and medium-sized enterprises in particular is low”*



## Why a Buckinghamshire Brexit Summit?

- Important for businesses to be aware of the possibilities ahead and plan for likely eventualities
- A forum for business leaders to have frank conversations
- A chance to hear practical and impartial information from those ‘in the know’
- Addressing key considerations for business: trade, supply chain resilience, workforce

# Buckinghamshire Brexit Summit 2019

## What to expect today

- National and local preparations for 'no deal' / WTO
- Central government guidance and advice
- Practical advice and support from your Growth Hub
- Information on supply chain resilience
- Practical Brexit advice

***“Luck is a matter of preparation meeting opportunity”***

**- Seneca**





*‘At least Chris Grayling isn’t in charge of the ferry.’*



# Buckinghamshire

## A great place to live, work and do business

### Now

- 4<sup>th</sup> highest productivity in the country
- SME based but global player
- Major leading innovators – Silverstone, Pinewood Studios, Bosch
- Close to the M4 and M40 strategic corridor
- Links to Heathrow – “Gateway to the World”

### And post-Brexit

- England's Economic Heartland
- Oxford to Cambridge expressway
- East-West Rail

ENGLAND'S  
ECONOMIC  
HEARTLAND



SILVERSTONE PARK™

EastWestRail

Heathrow

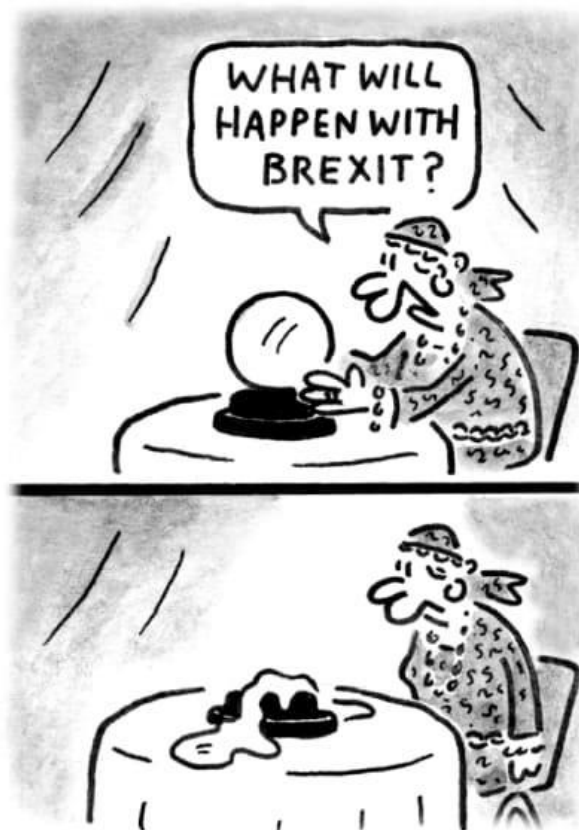


Westcott  
Venture Park

AYLESBURY  
woodlands

MATT

---





# A Brexit Resilient Buckinghamshire



**Neil Gibson**

Executive Director

Transport, Economy & Environment

Buckinghamshire County Council

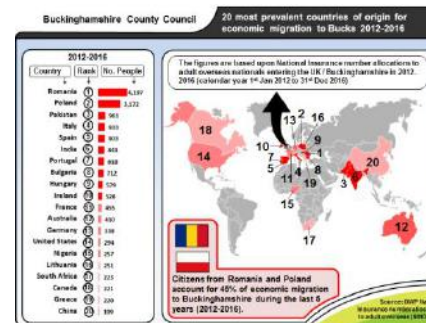
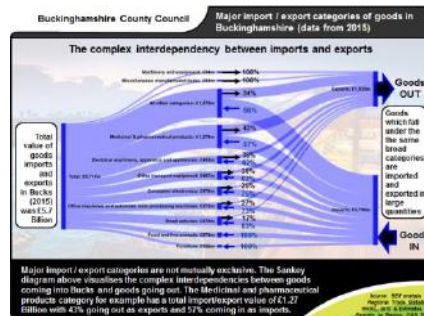
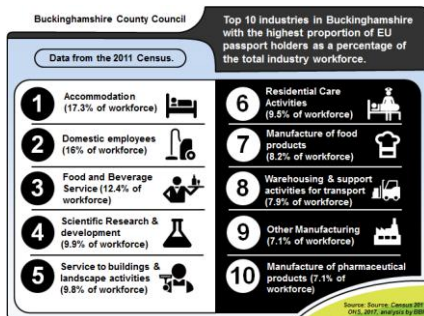
# Brexit preparations in Buckinghamshire

In partnership with BBF, Buckinghamshire County Council started preparing for Brexit in earnest around **May 2017**

- Initial scoping of potential risks and opportunities presented by Brexit
- Task & Finish Group meeting monthly - representatives from across the Council (and BBF) ensuring strategic overview and expert input

**Phase 1** (2017 to mid 2018) focused on analysis and lobbying, including:

- **Workforce analysis** (BCC and countywide)
- **Buckinghamshire businesses & trade analysis** (including exposure to Brexit)
- **Lobbying government** to take into account the needs of businesses and the public sector post-Brexit (harnessing opportunities and mitigating risk)
- **Signposting information to businesses and residents**
- **Buckinghamshire Brexit Summit** (December 2017)



# Brexit preparations in Buckinghamshire

- Following the establishment of a solid analytical foundation: “*So what do we do about it?*”
- Mid to late 2018, government also increased engagement across the board

**Phase 2** (mid 2018 to present) has focused on practical actions to ensure Buckinghamshire’s preparedness and to support businesses and residents across Bucks, with a special focus in two key areas:

- **EU Settlement Scheme:** supporting the scheme’s roll-out and providing further resources to support EU nationals
- **No deal preparations:** helping ensure the resilience of BCC, partners, businesses, and residents across Bucks

## EU CITIZENS STAY INFORMED

If you are an EU citizen, you and your family members will be able to apply to the EU Settlement Scheme to continue living in the UK after 31 December 2020.



The EU Settlement Scheme will fully open by 30 March 2019. You will be able to apply until 30 June 2021 and your rights will remain unchanged until then.

Go to [gov.uk/eu-settled-status](https://gov.uk/eu-settled-status) for more information.

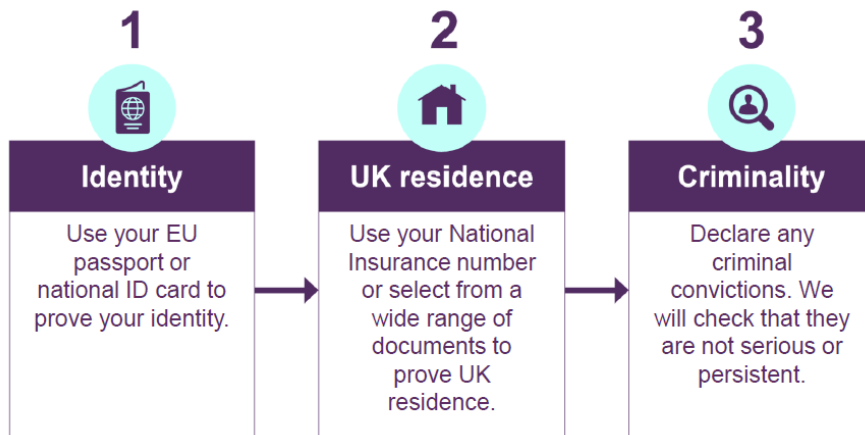


Prepare for EU Exit

# EU Settlement Scheme overview

- Scheme will also apply in the event of a 'no deal' (albeit with slight modifications)
- Currently in open test phase and the vast majority of EU nationals can apply
- Pre-Settled or Settled Status means that EU citizens will have the **same rights and access to services and benefits as now**

## Process



## More information

[www.gov.uk/settled-status-eu-citizens-families](https://www.gov.uk/settled-status-eu-citizens-families)

## Criteria



## Link to application

[www.gov.uk/apply-stay-uk-leaves-eu-test-phase](https://www.gov.uk/apply-stay-uk-leaves-eu-test-phase)



# **EU Settlement Scheme in Buckinghamshire**

BCC is committed to support the roll-out of the EU Settlement Scheme in Buckinghamshire, including supporting the most vulnerable in society

## **Information**



- Targeted communications promoting the EU Settlement Scheme to businesses, social care providers, employees, etc.
- Presentations to businesses and social care providers
- Signposted information on BCC and BBF websites

## **Registrars**



- Passport and ID checking service, allowing residents to verify documents if unable to do so online for a one-time £14 fee (at cost)
- Service will be up and running in Aylesbury registrars and Wycombe library by end of March
- Ability to set up pop-up events and support partners and suppliers with passport/ID checking service

## **Libraries**

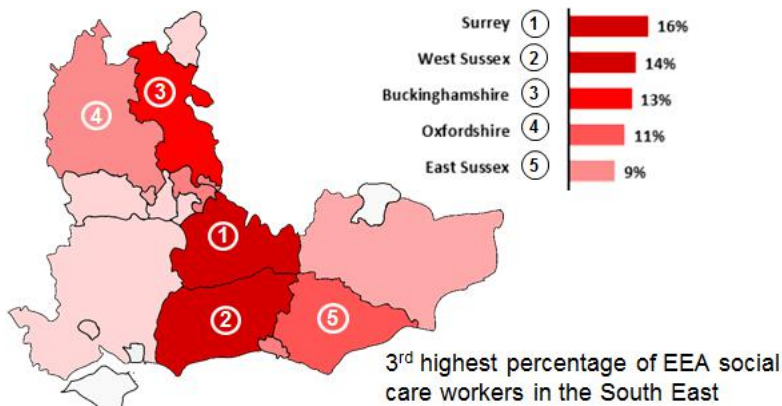


- Libraries staff ready to provide information on scheme and signpost to national guidance and registrars service
- Unlimited access to PCs and internet for scheme registration
- In-person support to access government helplines (phone and online)



# EU Settlement Scheme in Buckinghamshire

- The vast majority of EU nationals will have to apply for Settled Status to remain in the UK permanently post-Brexit
- We encourage businesses and individuals to share information with employees and other contacts
- Government have made a number of resources available online. These include template emails, posters, leaflets, and practical information on how to access the scheme.
- **Employer Toolkit:** <https://www.gov.uk/government/publications/eu-settlement-scheme-employer-toolkit>
- **Community Leaders Toolkit:** <https://www.gov.uk/government/publications/eu-settlement-scheme-community-leaders-toolkit>



**21,000**  
estimated EU nationals in  
Buckinghamshire (**3.98%**)

## No deal / WTO – local preparations

- We are working to national planning assumptions and government guidance. These are 'official-sensitive', and we are unable to share them, but... they are mostly what one would expect, and there has been extensive media coverage of most of these (although not always as factually as one would hope)
- Planning assumptions have focused on a Reasonable Worst Case Scenario. This is **not** what is expected or likely to occur, but by preparing for the worst we will be better prepared for what may actually happen

- **Key Planning Themes/Issues**



## No deal / WTO – national and local response

- If all, or part, of the Reasonable Worst Case Scenario comes to pass, public services nationally and locally have a number of plans in place to deal with potential disruption.
- For example, the supply and distribution of **medicines** is being coordinated nationally
- Government has secured a 6 week stockpile of medicines, and has plans in place to expedite the importation of medicines should that be required (air-freight, etc.)
- Individuals and organisations are asked not to stockpile medicines



### Business Continuity

- In the majority of cases, normal business continuity arrangements should cover most eventualities arising from short-term disruption. We have been reviewing our business continuity arrangements at the Council and we encourage all businesses to review theirs and check official government guidance at <https://www.gov.uk/business-uk-leaving-eu>

## No deal / WTO – local preparations

- We are working with partners across the board to ensure that public services in are resilient in the face of any potential disruption
- This is being coordinated locally through the Thames Valley Local Resilience Forum, and partners include Police, Health, Armed Forces, emergency responders, etc.
- As already mentioned, we are preparing for a Reasonable Worst Case Scenario. However, part of the job also requires understanding potential risks and their likelihood, for example:

| Risk   | Impact | Likelihood   |
|--|--------|--------------|
| Delays at customs resulting in significant traffic disruption in Kent            | High   | High         |
| Delays at customs resulting in significant traffic disruption in Buckinghamshire | Medium | Medium / Low |
| Large scale shortage of medicines  | High   | Low          |
| Large scale shortage of food   | High   | Low          |

- If you are concerned about specific issues, please check government's guidance in the first instance
- **Common sense still applies.** If something sounds too outlandish to be true, it probably is

# Take Home Messages

## **EU Settlement Scheme**

- The vast majority of EU nationals will have to apply for Settled Status through the EU Settlement Scheme.
- The scheme is now live and will be fully operational at the end of the month.
- Resources are available for employers and we encourage you to promote the scheme amongst your employees and contacts
- [www.gov.uk/settled-status-eu-citizens-families](https://www.gov.uk/settled-status-eu-citizens-families)

## **No deal / WTO preparations**

- Preparations for a reasonable worst case scenario are well underway with national and local plans in place to deal with any potential disruption
- Information is now available online. Businesses can find information here: <https://www.gov.uk/business-uk-leaving-eu>
- Please check what government guidance applies to your sector.

# More information

## HM Government

- Tool to find guidance relevant to your sector (answer 7 simple questions): <https://www.gov.uk/business-uk-leaving-eu>
- No deal guidance (technical notices, etc.):  
<https://www.gov.uk/government/collections/how-to-prepare-if-the-uk-leaves-the-eu-with-no-deal>



HM Government

## BBF

- Brexit-related information can be found on BBF's Brexit Hub:  
<https://bbf.uk.com/brexit>
- More business support and guidance can be found on BBF's website: <https://bbf.uk.com/>



## Buckinghamshire County Council

- For more information on the Council's Brexit preparations, please visit: <https://www.buckscc.gov.uk/services/council-and-democracy/brexit/>

